

PART OF SECTION 29 & 32 T.7N., R.1E., S.L.B. & M.

SILVER BELL ESTATES NO. 2

LOTS 90-96 & 109-112 & 114

IN WEBER COUNTY

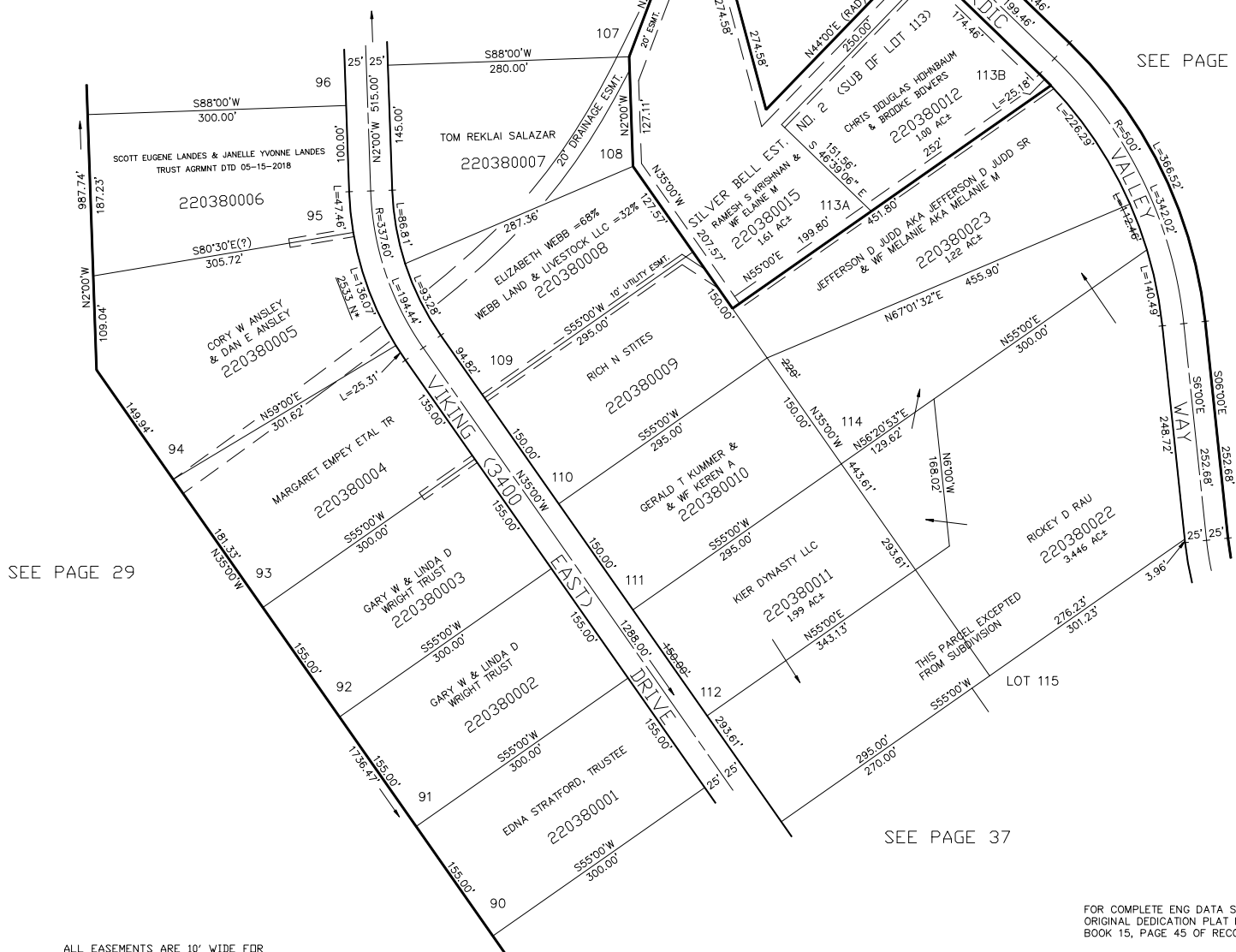
SCALE 1" = 100'

TAXING UNIT: 28

SILVER BELL ESTATES NO. 2
(SUBDIVISION OF LOT 113)FOR COMPLETE ENG DATA SEE
ORIGINAL DEDICATION PLAT IN
BOOK 44, PAGE 22 OF RECORDS.

SEE PAGE 39

SEE PAGE 29



SEE PAGE 37

FOR COMPLETE ENG DATA SEE
ORIGINAL DEDICATION PLAT IN
BOOK 15, PAGE 45 OF RECORDS.ALL STREETS ARE PRIVATE STREETS
NOT PUBLIC THOROUGHFARES